



**Beaufort County Public Works
Stormwater Infrastructure
Project Summary**

Project Summary: Bluffton Vacuum Truck - Woodbridge Subdivision, Sailors Choice, Brunson Street, Allendale Street and Luray Street

Project #: 2009-159 Completed: Jun-09

Narrative Description of Project:
Cleaned out (98) catch basins. Jetted (3) crossline pipes and 294 L.F. of roadside pipe.

Material Cost, Rental Equipment Summary, and Labor

Material	Unit	Cost/Unit	Qty	Cost
Water	gallon	\$0.01	3,300	\$33.00
Diesel	gallon	\$2.21	89.0	\$196.69
Labor	hours		81.0	\$2,584.81
Total Cost of Materials, Rental Equip., and Labor				\$2,814.50

Note: Labor cost includes the employee's salary plus fringe benefits.

Equipment Cost

Item	Asset	Cost/Hour	Hrs.	Cost
Vacuum Truck	22812	\$20.30	40.0	\$812.00
Total Equipment Cost				\$812.00

Cost/hour excludes fuel cost.

Total Cost: \$3,626.50

Site Photographs

Before



During



After



Project: Wood Bridge Subdivision Map 1

Activity: Vacuum Truck

Project #:2009-159

Township: Bluffton

Completed: June 2009



Legend

Drainage Type

- River
- Stream
- Outfall
- Lateral
- Roadside
- Crossline
- D/W
- Access
- Piped
- Bleeder
- Parcels



1 inch equals 385.75 feet



Project: Wood Bridge Subdivision Map 2

Activity: Vacuum Truck

Project #:2009-159

Township: Bluffton

Completed: June 2009

Legend

Drainage Type

- River
- Stream
- Outfall
- Lateral
- Roadside
- Crossline
- D/W
- Access
- Piped
- Bleeder
- Parcels



1 inch equals 200.38 feet

Project: Wood Bridge Subdivision Map 3

Activity: Vacuum Truck

Project #:2009-159

Township: Bluffton

Completed: June 2009



Legend

Drainage Type

- River
- Stream
- Outfall
- Lateral
- Roadside
- Crossline
- D/W
- Access
- Piped
- Bleeder
- Parcels



1 inch equals 171.16 feet

Prepared By: BC Stormwater Management Utility
Date Print: 8/17/09
File:C:/sethdata/projects/projectmaps/Wood Bridge Map 3_2009_159

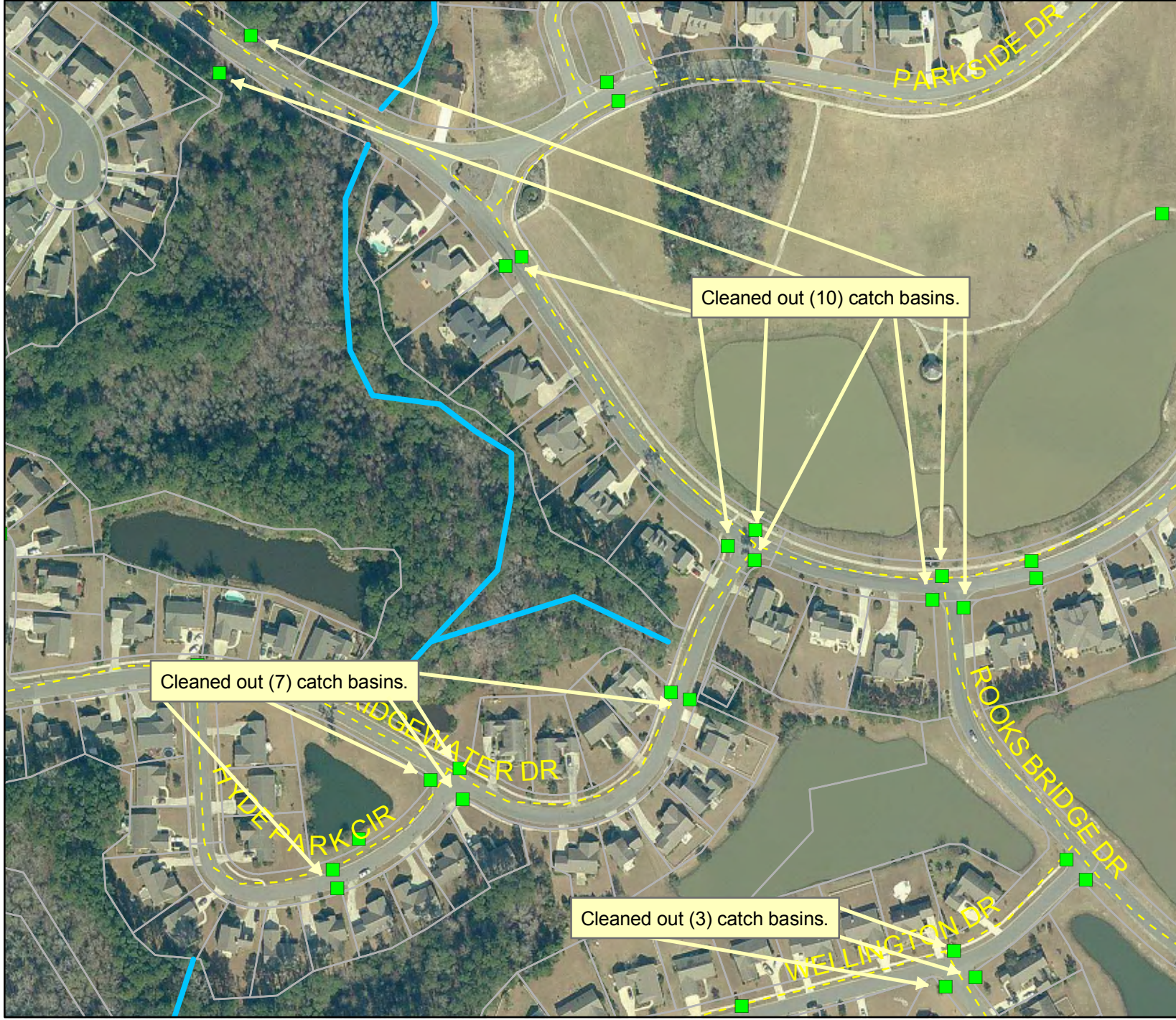
Project: Wood Bridge Subdivision
Map 4

Activity: Vacuum Truck

Project #:2009-159

Township: Bluffton

Completed:
June 2009



Legend

Drainage Type

- River
- Stream
- Outfall
- Lateral
- Roadside
- Crossline
- D/W
- Access
- Piped
- Bleeder
- Parcels



1 inch equals 202.15 feet

Project: Wood Bridge Subdivision Map 5

Activity: Vacuum Truck

Project #:2009-159

Township: Bluffton

Completed: June 2009



Legend

Drainage Type

- River
- Stream
- Outfall
- Lateral
- Roadside
- Crossline
- D/W
- Access
- Piped
- Bleeder
- Parcels



1 inch equals 169.03 feet

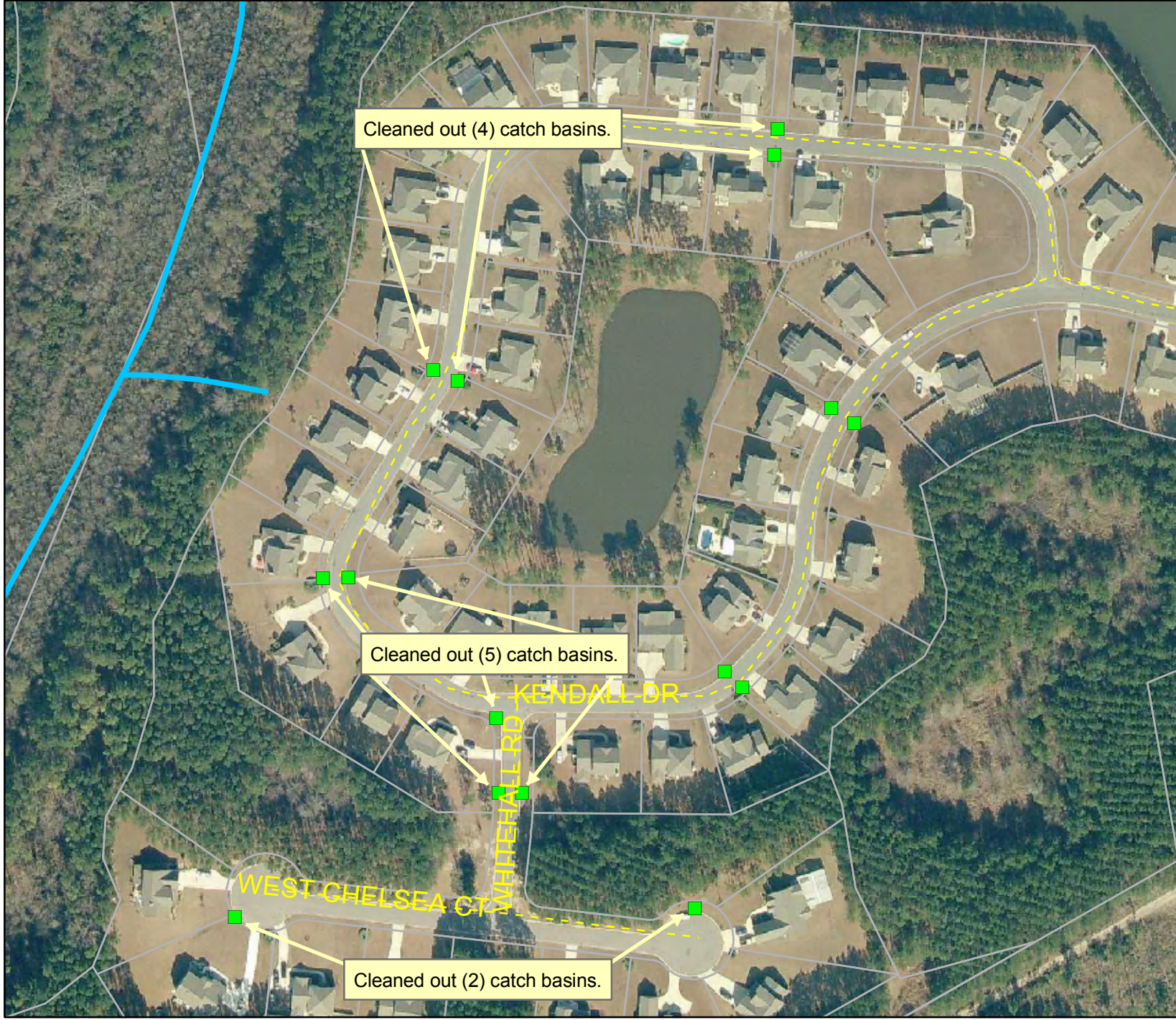
Project: Wood Bridge Subdivision Map 6

Activity: Vacuum Truck

Project #:2009-159

Township: Bluffton

Completed: June 2009



Legend

Drainage Type

- River
- Stream
- Outfall
- Lateral
- Roadside
- Crossline
- D/W
- Access
- Piped
- Bleeder
- Parcels



1 inch equals 174.48 feet

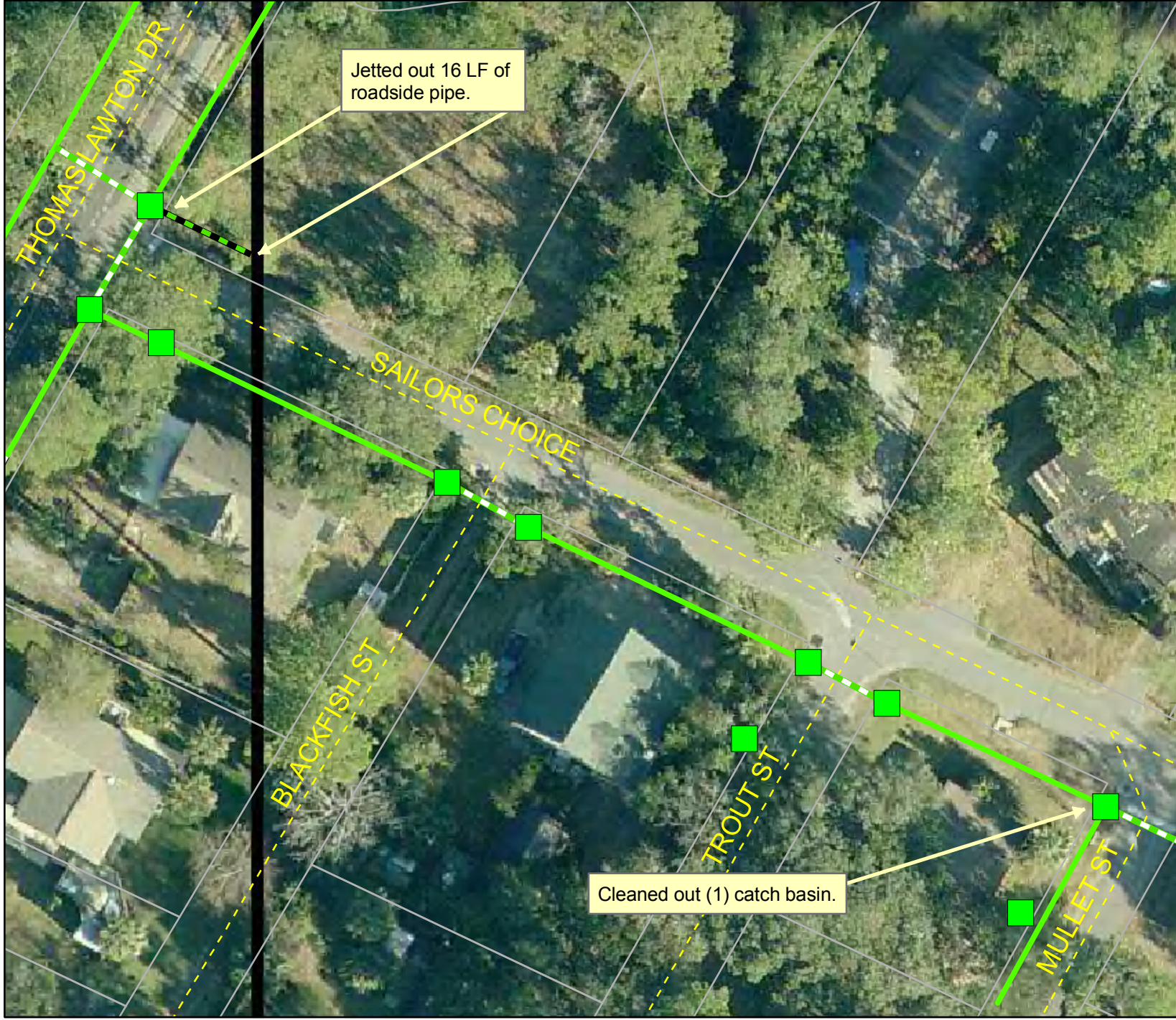
Project: Sailors Choice

Activity: Vacuum Truck

Project #:2009-160

Township: Bluffton

Completed: June 2009



Legend

Drainage Type

- River
- Stream
- Outfall
- Lateral
- Roadside
- Roadside Pipe
- Crossline
- D/W
- Access
- Piped
- Bleeder
- Parcels



1 inch equals 39.86 feet

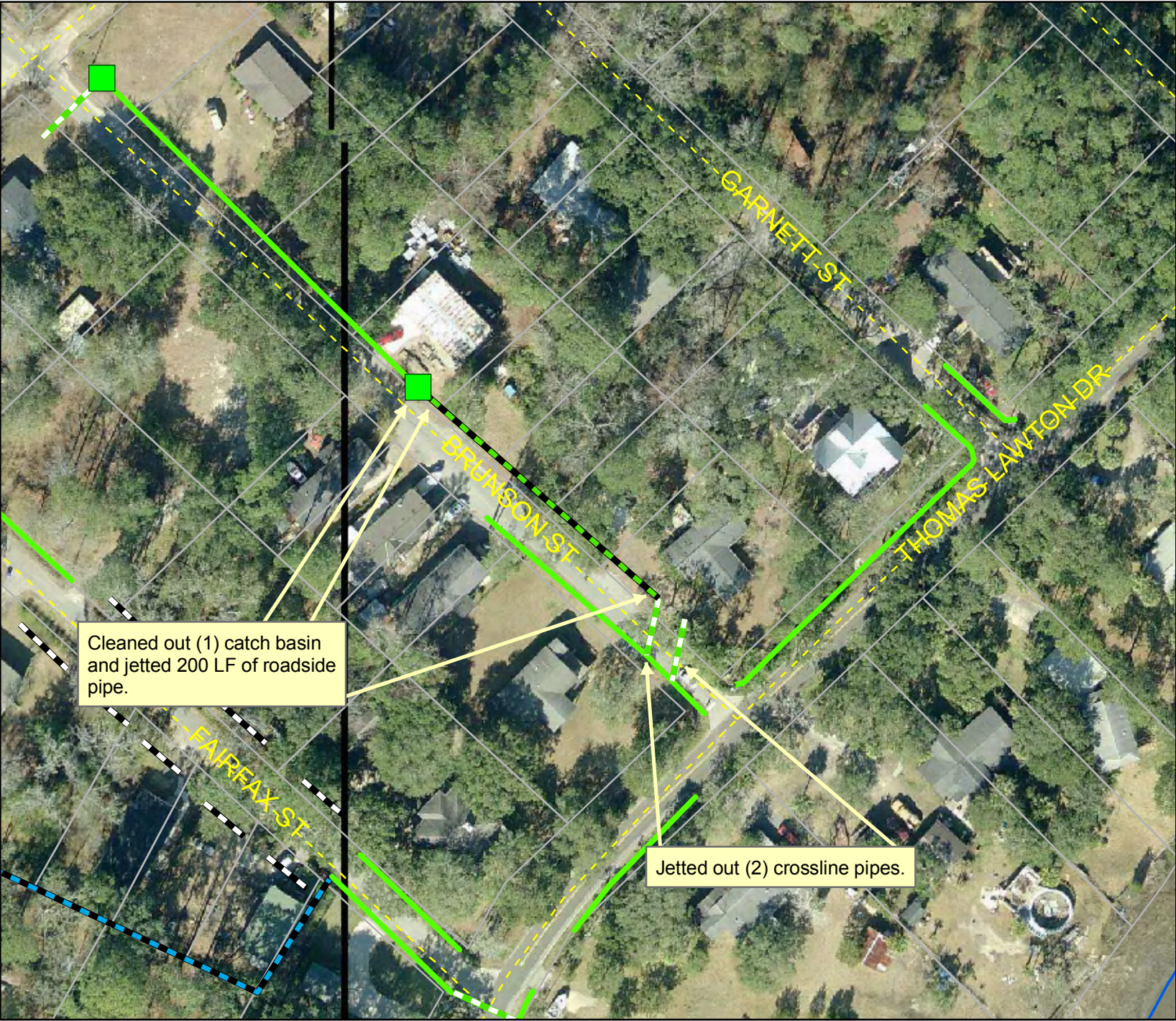
Project: Brunson Street

Activity: Vacuum Truck

Project #:2009-160

Township: Bluffton

Completed: June 2009



Legend

Drainage Type

- River
- Stream
- Outfall
- Lateral
- Roadside
- Roadside Pipe
- Crossline
- D/W
- Access
- Piped
- Bleeder
- Parcels



1 inch equals 84.66 feet

Project: Allendale Street & Luray Street

Activity: Vacuum Truck

Project #:2009-160

Township: Bluffton

Completed: June 2009



Legend

Drainage Type

- River
- Stream
- Outfall
- Lateral
- Roadside
- Roadside Pipe
- Crossline
- D/W
- Access
- Piped
- Bleeder
- Parcels



1 inch equals 39.86 feet